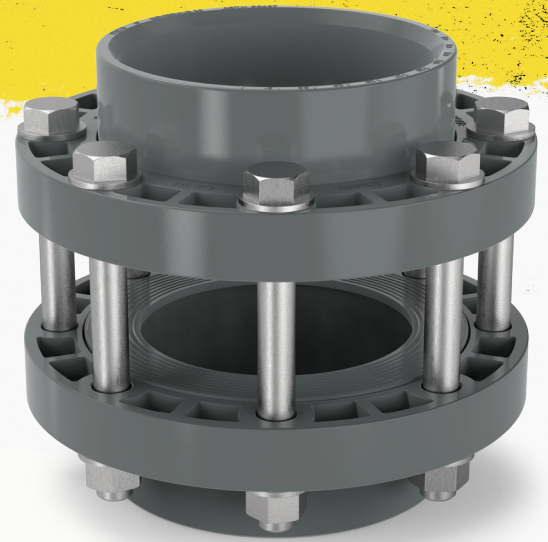




ANSI Flange Kits

Jandy ANSI-150 PVC Flange Kits offer easy installation for commercial pools with pre-sized hardware that is designed to work with Jandy-brand JCP pumps, SFSM filters, and butterfly valves.

- Flange and ring made of PVC to SCH80 specifications, and are rated to 150 PSI
- Kits for JCP pump come with a single flange, EPDM gasket, and all stainless-steel hardware
- Kits for Jandy butterfly valves come with two flanges and all stainless-steel hardware (no gasket necessary; Jandy butterfly valves have an integrated gasket)
- Kits for SFSM filters come with two sets of flanges, gaskets, and hardware; enough for one filter installation



SPECIFICATIONS

| Part Number | Description | Quantity | Item | Item Specification |
|-------------|--|----------|----------|------------------------------|
| JFKBVL3 | 3" ANSI Flange Kit for Jandy HD Butterfly Valves | 2 | Flanges | 3", 4-bolt Loose Flange Set |
| | | 4 | Hardware | SS Bolt 5/8"-11 x 6" |
| | | 4 | Hardware | SS Nut 5/8"-11 |
| | | 8 | Hardware | SS Flat Washer 5/8" |
| JFKBVL4 | 4" ANSI Flange Kit for Jandy HD Butterfly Valves | 2 | Flanges | 4", 8-bolt Loose Flange Set |
| | | 8 | Hardware | SS Bolt 5/8"-11 x 6" |
| | | 8 | Hardware | SS Nut 5/8"-11 |
| | | 16 | Hardware | SS Flat Washer 5/8" |
| JFKBVL6 | 6" ANSI Flange Kit for Jandy HD Butterfly Valves | 2 | Flanges | 6", 8-bolt Loose Flange Set |
| | | 8 | Hardware | SS Bolt 3/4"-10 x 7" |
| | | 8 | Hardware | SS Nut 3/4"-10 |
| | | 16 | Hardware | SS Flat Washer 3/4" |
| JFKBVL8 | 8" ANSI Flange Kit for Jandy HD Butterfly Valves | 2 | Flanges | 8", 8-bolt Loose Flange Set |
| | | 8 | Hardware | SS Bolt 3/4"-10 x 7" |
| | | 8 | Hardware | SS Nut 3/4"-10 |
| | | 16 | Hardware | SS Flat Washer 3/4" |
| JFKHL3 | 3" ANSI Flange Kit for Filters | 2 | Flanges | 3", 4-bolt Loose Flange Half |
| | | 2 | Gaskets | 3" Flange Gasket EPDM |
| | | 8 | Hardware | SS Bolt 5/8"-11 x 3.25" |
| | | 8 | Hardware | SS Nut 5/8"-11 |
| | | 16 | Hardware | SS Flat Washer 5/8" |
| JFKHL4 | 4" ANSI Flange Kit for JCP Pump Outlet | 1 | Flange | 4", 8-bolt Loose Flange Half |
| | | 1 | Gasket | 4" Flange Gasket EPDM |
| | | 8 | Hardware | SS Bolt 5/8"-11 x 3.25" |
| | | 8 | Hardware | SS Nut 5/8"-11 |
| | | 16 | Hardware | SS Flat Washer 5/8" |
| JFKHL6N | 6" ANSI Flange Kit for JCP Pump Inlet w/ NO STRAINER | 1 | Flange | 6", 8-bolt Loose Flange Half |
| | | 1 | Gasket | 6" Flange Gasket EPDM |
| | | 8 | Hardware | SS Bolt 5/8"-11 x 2.25" |
| | | 8 | Hardware | SS Flat Washer 5/8" |
| JFKHL6S | 6" ANSI Flange Kit for JCP Pump Inlet w/ STRAINER | 1 | Flange | 6", 8-bolt Loose Flange Half |
| | | 1 | Gasket | 6" Flange Gasket EPDM |
| | | 8 | Hardware | SS Bolt 3/4"-10 x 3.5" |
| | | 16 | Hardware | SS Flat Washer 3/4" |
| | | 8 | Hardware | SS Nut 3/4" |

FLANGE KITS FOR JANDY HD BUTTERFLY VALVES



| | Part Number | Description | Quantity | Item | Item Specification |
|--|-------------|--|----------|----------|-----------------------------|
| | JFKBVL3 | 3" ANSI Flange Kit for Jandy HD Butterfly Valves | 2 | Flanges | 3", 4-bolt Loose Flange Set |
| | | | 4 | Hardware | SS Bolt 5/8"-11 x 6" |
| | | | 4 | Hardware | SS Nut 5/8"-11 |
| | | | 8 | Hardware | SS Flat Washer 5/8" |
| | JFKBVL4 | 4" ANSI Flange Kit for Jandy HD Butterfly Valves | 2 | Flanges | 4", 8-bolt Loose Flange Set |
| | | | 8 | Hardware | SS Bolt 5/8"-11 x 6" |
| | | | 8 | Hardware | SS Nut 5/8"-11 |
| | | | 16 | Hardware | SS Flat Washer 5/8" |
| | JFKBVL6 | 6" ANSI Flange Kit for Jandy HD Butterfly Valves | 2 | Flanges | 6", 8-bolt Loose Flange Set |
| | | | 8 | Hardware | SS Bolt 3/4"-10 x 7" |
| | | | 8 | Hardware | SS Nut 3/4"-10 |
| | | | 16 | Hardware | SS Flat Washer 3/4" |
| | JFKBVL8 | 8" ANSI Flange Kit for Jandy HD Butterfly Valves | 2 | Flanges | 8", 8-bolt Loose Flange Set |
| | | | 8 | Hardware | SS Bolt 3/4"-10 x 7" |
| | | | 8 | Hardware | SS Nut 3/4"-10 |
| | | | 16 | Hardware | SS Flat Washer 3/4" |

** Includes two flanges and all necessary hardware

FLANGE KITS FOR JANDY JCP SERIES PUMPS



| | Part Number | Description | Quantity | Item | Item Specification | | | |
|---|-------------|---|----------|----------|--|---|--------|------------------------------|
| | JFKHL4 | 4" ANSI Flange Kit for JCP Pump Outlet | 1 | Flange | 4", 8-bolt Loose Flange Half | | | |
| | | | 1 | Gasket | 4" Flange Gasket EPDM | | | |
| | | | 8 | Hardware | SS Bolt 5/8"-11 x 3.25" | | | |
| | | | 8 | Hardware | SS Nut 5/8"-11 | | | |
| | | | 16 | Hardware | SS Flat Washer 5/8" | | | |
| | | | | JFKHL6N | 6" ANSI Flange Kit for JCP Pump Inlet w/ NO STRAINER | 1 | Flange | 6", 8-bolt Loose Flange Half |
| 1 | Gasket | 6" Flange Gasket EPDM | | | | | | |
| 8 | Hardware | SS Bolt 5/8"-11 x 2.25" | | | | | | |
| 8 | Hardware | SS Flat Washer 5/8" | | | | | | |
| | JFKHL6S | 6" ANSI Flange Kit for JCP Pump Inlet w/ STRAINER | | | | 1 | Flange | 6", 8-bolt Loose Flange Half |
| | | | | | | 1 | Gasket | 6" Flange Gasket EPDM |
| | | | 8 | Hardware | SS Bolt 3/4"-10 x 3.5" | | | |
| | | | 16 | Hardware | SS Flat Washer 3/4" | | | |
| | | | 8 | Hardware | SS Nut 3/4" | | | |

** Includes inlet or outlet flange, gasket and all necessary hardware

FLANGE KITS FOR JANDY SFSM FILTERS



| | Part Number | Description | Quantity | Item | Item Specification |
|--|-------------|---|----------|----------|------------------------------|
| | JFKHL3 | 3" ANSI Flange Kit for Jandy SFSM Filters | 2 | Flanges | 3", 4-bolt Loose Flange Half |
| | | | 2 | Gaskets | 3" Flange Gasket EPDM |
| | | | 8 | Hardware | SS Bolt 5/8"-11 x 3.25" |
| | | | 8 | Hardware | SS Nut 5/8"-11 |
| | | | 16 | Hardware | SS Flat Washer 5/8" |

** Includes two flanges, gaskets, and necessary hardware