



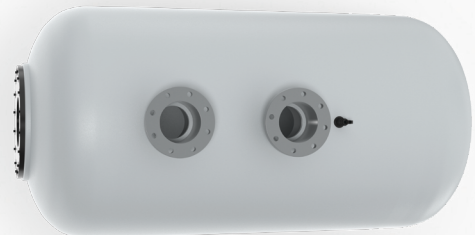
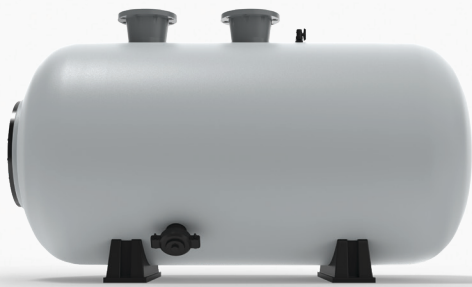
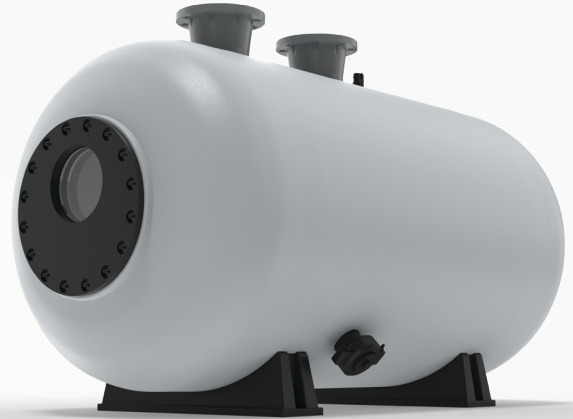
Commercial SFHT Series Horizontal Sand Filters

High-rate horizontal sand filters designed for high-use recreational pools

Jandy commercial horizontal sand filters provide superior filtration for enhanced water clarity in high-use, commercial pool applications.

- Heavy-duty 5-layer laminated fiberglass tank for years of trouble-free service
- Isophthalic laminate applied radially and axially for maximum strength
- Robotic hole placement ensures an exact fit of plumbing flanges
- Industry-leading 16" round access hatch with clear viewport

- Proprietary laterals load and unload media more effectively, aiding in fast, efficient backwash cycles
- Generous drain outlet speeds media replacement
- Every unit tested and documented before shipment
- NSF-50 listed



SKUs AND SPECS

| Part Number | Description | Nominal Diameter Inches | Nominal Length Inches | Filter Area SQF | Flow @ 20 GPM/SQF GPM | Flow @ 15 GPM/SQF GPM | Flow @ 10 GPM/SQF GPM | Inlet/Outlet Size Inches | Inlet/Outlet Type |
|-------------|---|----------------------------|--------------------------|--------------------|-----------------------------|-----------------------------|-----------------------------|--------------------------------|----------------------|
| SFHT3461 | Jandy Horizontal Sand Filter, 34 x 61, 13.5 Sq Ft | 34 | 61 | 13.5 | 270 | 203 | 135 | 4 | Flange |
| SFHT3472 | Jandy Horizontal Sand Filter, 34 x 72, 15.3 Sq Ft | 34 | 72 | 15.3 | 306 | 230 | 153 | 6 | Flange |
| SFHT3484 | Jandy Horizontal Sand Filter, 34 x 84, 19.3 Sq Ft | 34 | 84 | 19.3 | 386 | 290 | 193 | 6 | Flange |
| SFHT4272 | Jandy Horizontal Sand Filter, 42 x 72, 21.0 Sq Ft | 42 | 72 | 21.0 | 420 | 315 | 210 | 6 | Flange |
| SFHT4284 | Jandy Horizontal Sand Filter, 42 x 84, 23.0 Sq Ft | 42 | 84 | 23.0 | 460 | 345 | 230 | 6 | Flange |
| SFHT4296 | Jandy Horizontal Sand Filter, 42 x 96, 26.0 Sq Ft | 42 | 96 | 26.0 | 520 | 390 | 260 | 6 | Flange |

| Part No | Description | Filter Area SQF | Nominal Diameter Inches | Nominal Length Inches | A | B | C | D | E | F | Sand Req'd Pounds |
|----------|---|--------------------|----------------------------|--------------------------|---------------------------|-------------------------|--------------------------|-------------------------|---------------------------|-----------------|----------------------|
| | | | | | Actual Diameter Inches | Actual Length Inches | Overall Height Inches | Base Distance Inches | Plumbing Spread Inches | Connection Type | |
| SFHT3461 | Jandy Horizontal Sand Filter, 34 x 61, 13.5 Sq Ft | 13.5 | 34 | 61 | 34 9/16" | 68" | 41 1/2" | 33 5/8" | 24" | Flange | 1400 |
| SFTH3472 | Jandy Horizontal Sand Filter, 34 x 72, 15.3 Sq Ft | 15.3 | 34 | 72 | 34 9/16" | 77 1/2" | 41 1/2" | 39" | 24" | Flange | 1600 |
| SFHT3484 | Jandy Horizontal Sand Filter, 34 x 84, 19.3 Sq Ft | 19.3 | 34 | 84 | 34 9/16" | 97 5/16" | 41 7/8" | 50" | 47.5" | Flange | 2000 |
| SFHT4272 | Jandy Horizontal Sand Filter, 42 x 72, 21.0 Sq Ft | 21.0 | 42 | 72 | 42 9/16" | 85 13/16" | 50 15/16" | 40" | 36.375" | Flange | 2700 |
| SFHT4284 | Jandy Horizontal Sand Filter, 42 x 84, 23.0 Sq Ft | 23.0 | 42 | 84 | 42 9/16" | 93 11/16" | 50 15/16" | 47 1/2" | 36.375" | Flange | 3100 |
| SFHT4296 | Jandy Horizontal Sand Filter, 42 x 96, 26.0 Sq Ft | 26.0 | 42 | 96 | 42 9/16" | 99 7/16" | 50 7/8" | 50" | 49.875" | Flange | 3200 |

